



# City Funds Evaluation Programme

Written By Soraya Safazadeh, Dr Lisa Muller, Wren Aigaki-Lander and Liz Zeidler - July 2020

Updated By Lucy Gilbert and Mel Cairns - January 2022





# Contents

Foreword	3
What does this report cover?	4
Introduction to the Indicator Framework	4
Levels of measurement across the 'Golden Thread'	8
Levels of data	8
Tracking change over time	9
The City Funds indicator framework	12
Using the framework at city-level	15
Using the framework at Funding Priority Group-level	15
Using the framework at project-level	15
The Happiness Pulse	16
Full indicator list	18
FPG indicator sets	35

# Foreword

Bristol has always been an ambitious city, one where innovation happens and rules are challenged. The City Funds programme sits strongly in that tradition, asking:

- How can we apply a systems approach to fund big ideas in the city?
- How can funding bring diverse groups together to tackle long standing challenges facing our communities?
- How can we better understand what really supports lasting change and find the levers that can help us get there faster?

The lead economist for the World Bank, Joseph Stiglitz, wisely said, “if we measure the wrong things, we strive for the wrong things.” The City Funds team recognised this challenge early on and commissioned the Centre for Thriving Places to develop a cost effective evaluation programme that can stand the test of time. The indicator set developed for City Funds is based entirely on high quality secondary data available at local authority and ward level, aiming to not only guide City Funds’ evaluation plans but also to help create a clear set of shared goals to unite all partners across the city-wide programme of work.

This document aims to support just that. It introduces users to:

- **The City Funds Metrics Framework** designed to help implement City Funds’ strategy and understand its impact, alongside those of the One City Plan to develop a fair, healthy and sustainable city for all
- **The comprehensive sets of indicators** to support City Funds’ funding priorities, aligned with the Sustainable Development Goals (SDGs) and enabling grantees and investees to measure, understand and grow their own impact
- **The City Funds bespoke Happiness Pulse tool** to measure each project’s impact on citizen wellbeing

We hope you find this first phase of the evaluation programme useful and we very much look forward to seeing the measurable impact this ambitious city-wide programme has in the years to come.

Liz Zeidler

Chief Executive, Centre for Thriving Places

[www.centreforthrivingplaces.org](http://www.centreforthrivingplaces.org)

## What does this report cover?

This document sets out the evaluation programme for City Funds. Its aim is to help the City Funds team and wider stakeholders to understand how, where and when projects supported through grants or investment might show an impact in line with the aims of the programme.

The core piece of work introduced here is the City Funds Indicator Framework, the backbone of the evaluation programme setting out the key impact areas, their themes and the detailed indicators within these. To make the work as applicable as possible for the City of Bristol, two ways of organising the indicators are given particular attention:

1. The four Funding Priority Groups (FPGs) which originally identified City Funds' priorities for funding;
2. The One City Plan developed by Bristol City Council, aligning Bristol's ambitions and targets to the UN Sustainable Development Goals (SDGs).

We will explain how the Indicator Framework was developed and what elements it contains to make it easy for different stakeholders to use and interrogate depending on their needs. Furthermore, this report contains an explanation of:

- 'The golden thread' of impact that illustrates the Centre for Thriving Places' multi-level approach to measurement;
- The approach to measurement over time with three elements: baselining, year-on-year impact and systems change;
- How impact works in complex projects, highlighting what is realistic in terms of measurement and change;
- How the Indicator Framework can support funding and investment decision making;
- The Happiness Pulse that has been designed for City Funds to be used by projects to collect person-level data.

## Introduction to the Indicator Framework

Centre for Thriving Places has built on and adapted its Thriving Places Index (TPI) to design a metrics framework to be used by City Funds to measure the impact of its funding and investment over time. This framework supplies a list of metrics and indicators which enables City Funds to track the impact of funded projects on people and the city overall based on the City Funds theory of change (ToC).

The three headline elements of the indicator framework (see Figure 1) are based on the goals of the City Funds ToC - that is:

*Bristol is a **fair, healthy and sustainable** city; a city of hope and aspiration where everyone can and share in its success.*

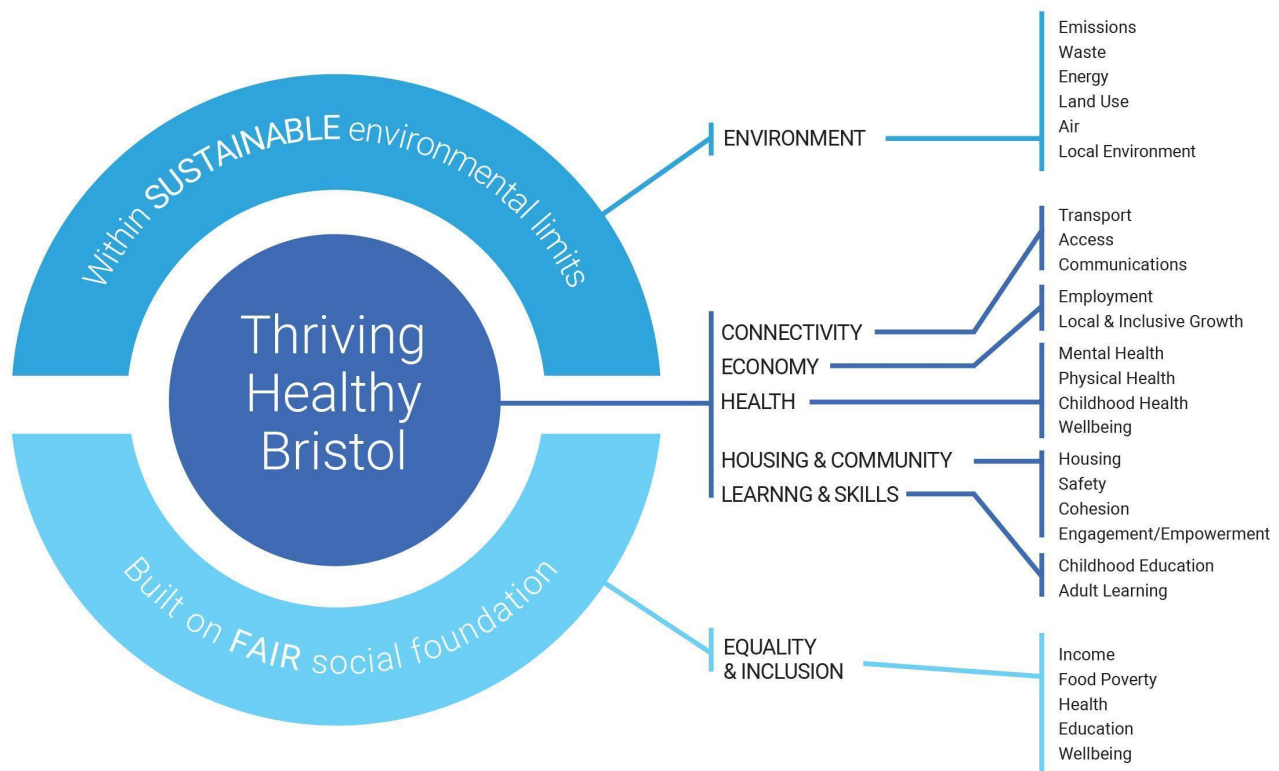
*Inequality and disadvantage is reduced: everyone can contribute to and benefit from dynamic, inclusive communities and a prosperous, sustainable local economy.*

This also aligns the City Funds ambition with the goals of the One City Plan ([www.bristolonecity.com/about-the-one-city-plan](http://www.bristolonecity.com/about-the-one-city-plan)) and to the UN Sustainable Development Goals (SDGs) (<https://sdgs.un.org/goals>).

The multi-level approach taken by Centre for Thriving Places to develop the evaluation framework means that we have:

1. A clear set of shared **headline goals** across the city - fair, healthy and sustainable - against which we can produce scores at the local authority level based on reputable secondary data sources;
2. A set of **domains** which match the **One City Themes**, providing distinct **policy areas** for which scores can be produced to track progress;
3. A detailed set of **sub-domains** giving more granular **priority areas** within each domain to help focus resources and effort based on the scores that have been tracked;
4. A broad range of **indicators** to reflect the diversity of action and actors in systemic place-based change.

One exception has been made to the themes as provided by the One City Plan: Equality and Inclusion has been added as its own theme. This was done to enable us to more clearly reflect the overall headline goals (fair, healthy and sustainable) when presenting indicators and calculating baseline or impact data in the future. The sub-domains gathered under Equality and Inclusion largely align with sub-themes detailed by the One City Plan (but are gathered under different themes).



**BRISTOL**  
**ONE CITY**

POWERED BY

**THRIVING**  
**PLACES**  
**INDEX**

Figure 1. Indicator Framework

City Funds' ToC details impact at three levels:

- *Enterprise impact; Fund-level impact*
- *Impact on People*
- *Systems-level Impact; City-wide impact*

The evaluation programme detailed here focuses on the **Impact on People**. In City Funds' ToC this is specified further through the outcomes based on the ToC of City Funds' Funding Priority Groups (see Table 1). However, the indicator framework incorporates additional uses within the ToC as well as the City Funds' wider ambition:

1. **Fund-level impact:** it is possible to score funding and investment decisions against whether they expect to have an impact on one or more indicators within the framework; this can also be checked against any further reporting by funded projects over time.
2. **City-wide impact:** the detailed list of indicators provided with the framework is based on reputable secondary data enabling a cost efficient way to track city-wide change over time and not just the impact of individual projects or changes made by individuals benefiting from them.

Furthermore, since the framework is based on the Golden Thread (see next section), taking into account the One City Plan, its themes and how this links to the SDGs, it can provide a blueprint for the impact evaluation of many Bristol initiatives.

Table 1. Funding Priority Group selected target outcomes

Initial Funding Priority	Selected Target Outcomes to Include
<b>Health &amp; Wellbeing</b>	Reduction in food insecurity
	Food desert reduction
	Food poverty reduction
	Reduction in obesity in children
	Nutrition related health outcomes are improved in target communities
<b>Economic Inclusion</b>	Reduction in individuals who are, or are at risk of becoming, NEET in target communities
	Reduced income inequality across key stakeholder groups
	Increased diversity in employment
	Increased quality of jobs / job satisfaction across target communities
	Increased % of jobs paying a living wage
	Increased wealth creation across groups in target communities
	Increased numbers in target communities using public or active transport
<b>Community Initiatives</b>	Increased economic resilience across target communities
	Improved housing affordability in target communities
	Increased number of sustainable assets in community ownership in target communities
	Increased social capital across target communities
	Reduction in social fragmentation
	Reduction in wellbeing inequality / Improved wellbeing across target communities
	Increased community leadership of responses to local challenges across target communities
	Increased capacity of VCSE organisations working in target communities
	Increased access to resources and finance for VCSE organisations working in target communities
<b>Environmental Transformation</b>	Improved air quality in target communities
	Reduced greenhouse gas concentration in target communities
	Increased tree canopy across target communities
	Increased accessibility of local wildlife sites for those living in target communities
	Increased area of natural / semi-natural networks of effective green and blue spaces
	Increased biodiversity (urban) across target communities
	Reduced waste output generation
	Increased local renewable energy generation

## Levels of measurement across the 'Golden Thread'

The Centre for Thriving Places approach to evaluation covers a systems view on wellbeing and the economy as well as taking in the 'whole place' and beyond through our Golden Thread.



Figure 2. Golden Thread approach

The City Funds evaluation programme covers impact at all levels, creating a 'Golden Thread' of impact:

- **Citizen to Project Impact.** The Happiness Pulse will measure project participants' wellbeing, using the Centre for Thriving Places developed and tested questionnaire.
- **Projects and Funding Priority Groups.** The indicator framework will help measure each project's impacts on funding priority areas. This is done by tracking relevant indicators at project-level, as well as Happiness Pulse responses regarding wellbeing impacts at citizen-level. Together, the collective impact of all funded projects will help inform their alignment to and impact on City Funds' aims.
- **City Funds and City-level Impact.** The contribution and alignment of City Funds' impact to the overall One City Plan goals will be measured via tracking the whole One City metric framework over time.
- **City and wider society impact.** The City Funds evaluation programme helps the city and all its citizens measure progress towards meeting the SDGs and becoming a thriving and healthy city built on a fair social foundation within sustainable environmental limits.

## Levels of data

The City Funds indicator framework covers data from different levels of granularity from city to people/citizen.

- City-wide data, such as the indicators in the framework which originated in the Thriving Places Index. These are not only available at the city-level, they are also comparable to all other local authorities in England and are often used to report against UN Sustainable Development Goals. This provides an opportunity to not only compare how Bristol is doing over time but also how it sits in the wider national and international context (which is part of the aspiration of the One City Plan).



- Others provide values for each ward in Bristol; for example, indicators that come from the Bristol Quality of Life Survey or are collected by Bristol City Council or Bristol based projects. These allow comparison between local areas, as well as detecting any change that is specific to wards that have received multiple funding and investment streams across the different themes/domains of interest.
- At the project-level the City Funds team collects data about each project's targets and aspirations, this process monitoring is not directly part of the evaluation framework but an essential part to understanding the impact.
- The indicators in the metrics framework do not collect person-level data, therefore the Happiness Pulse survey will be used to collect person/citizen-level data (see [Happiness Pulse](#) section).

Where applicable the City Funds indicator framework spreadsheet (see Table 3 for a tabular version) allows the user to look at each level of geography.

## Tracking change over time

When data are being collected or analysed, it is important to ensure evaluation is appropriate and proportionate to the potential impact of a programme or projects. In short, the more granular and small scale an impact is, the faster it is likely to change. For example, the personal wellbeing of people can change very rapidly, but if we are looking at wellbeing in the context of projects it is most useful to ask people about their wellbeing before they engage with an activity and again after they have done so which might happen within a 3 or 6 month time-frame. On the other hand an indicator like proportional tree cover will change much more slowly (discounting deforestation for the moment), and one would be less likely to see a rapid increase in the proportion of the city covered by trees.

The City Funds evaluation programme relies heavily on secondary data collection in the indicator framework, so when data for the indicators are updated depends on third parties. The frequency for each indicator is specified in the City Funds indicator list (Table 3), which also contains a recommendation on when each indicator should be calculated and changes compared. Some slower changing indicators should be baselined but are only worth comparing after a longer time period has elapsed, such as reporting on change after 5 years, while other indicators can be calculated and checked every 1 or 2 years. In the Golden Thread this relates to impacts on Place and Policy as well as some Funders and Commissioner related indicators.

At the individual and project levels, impact data will be collected through the Happiness Pulse. The timing of this is project-dependent and is likely to happen on an ongoing basis (see Happiness Pulse section for more detail).

Any process monitoring undertaken by City Funds should also happen on an ongoing basis, collecting information about both projects' targets and achievements.

More specifically by repeating data collection we can begin to track change over time.



Figure 3. City Funds evaluation over time

### Baselining

The full set of indicators are collected before the projects start (Year 0 or here before March 2020) to act as a baseline; this is what later measurements are compared to, to determine change.

### Year on year change

Some indicators are to be collected every year, such as indicators related to schools or transport and health (see Table 2 for more details). In addition to the indicators data from the Happiness Pulse as well as any process monitoring data are collected on an ongoing basis.

### Systems change

At Year 5, the full set of indicators are calculated again. Change in the slower changing indicators may be seen by comparing values after 5 years to baseline; in many contexts this is called system or lasting change. It is important to see any long-term change in the wider national context, unexpected events such as global pandemics but also slower changes for example through higher awareness of other issues such as climate change might have changed indicators anyway.

### A note on iterative learning

Looking at data over time will help with learning, especially for funding and investment programmes such as City Funds. It is impossible to predict what the impact of funding or investment will be but by looking at the evaluation data as well as the process monitoring information it is possible to learn and adapt programmes in line with priorities.

### A note on evaluation and Covid-19

The City Funds indicator baseline is based on secondary data which has been collected before the global Coronavirus pandemic. It is well known that main domains from employment to health to community cohesion will have been impacted a lot by the lockdown that England went through as a result of the threat caused by the pandemic. Whilst it is known that there is and will be an impact, it is not at all understood how this will play out. Some data such as school leaving grades are generally completely different to previous

years, while car travel (and associated emissions) plummeted during lockdown and is likely to increase above previous values during the period of easing (due to public transport being discouraged). Phrases like #buildbackbetter or #newnormal suggest that there is an appetite for change. This will have to be considered when assessing the impact of any project or programme, we simply don't know at this stage whether our 'baseline' will be of any value if what is done from here on is completely different. This again puts even more emphasis on process monitoring as this will need to tell an exact story of what the projects did, to help City Funds understand its impact among the noise generated by other changes.

# The City Funds indicator framework

Table 2. Mapping of domains, subdomains, SDGs and FPGs

City Funds Framework based on One City Plan			UN Sustainable Development Goals (SDGs)			Sub-Themes ordered by relevance to Funding Priority Groups' (FPGs) Theory of Change			
To evaluate City Funds, the One City Plan Themes and Sub-Themes ( <a href="https://www.bristolonecity.com/dashboard/">https://www.bristolonecity.com/dashboard/</a> ) have been reorganised into three headlines (Healthy, Environment and Fair). **Note that equality & inclusion is not a One City Plan theme			One City Plan targets are linked to the SDGs - this part of the framework map shows how the Sub-Themes relate to each goal, showing all the goals according to their numbers and the main two descriptions (see also <a href="https://www.bristolonecity.com/dashboard/">https://www.bristolonecity.com/dashboard/</a> for detailed SDGs and One City Plan annual targets by themes)			City Funds works with FPGs made up of practitioners and experts across Bristol. 'Yes' in the columns below means that at least one indicator from the FPGs Theory of Change can be grouped under the corresponding One City Plan Sub-Theme			
HEADLINE (One City overall aims)	DOMAIN (One City THEME)	SUBDOMAIN	Number(s)	Description (goal 1)	Description (goal 2)	Health & Wellbeing	Environmental Transformation	Economic Inclusion	Community Initiatives
HEALTHY	CONNECTIVITY	TRANSPORT	3, 9, 10, 11, 12, 13	Sustainable cities and communities	Responsible consumption and production	No	Yes	Yes	No
		ACCESS	9, 10, 11	Industry, innovation and infrastructure	Reduced inequalities	No	No	Yes	No
		COMMUNICATIONS	9, 10	Industry, innovation and infrastructure	Reduced inequalities	No	No	Yes	No
	ECONOMY	EMPLOYMENT	4, 8	Decent work and economic growth	Quality education	No	No	Yes	No
		INCOME	8, 10	Decent work and economic growth	Reduced inequalities	No	No	Yes	No



		<b>LOCAL &amp; INCLUSIVE GROWTH</b>	8, 9, 10, 11	Decent work and economic growth	Industry, innovation and infrastructure	No	No	Yes	Yes
	<b>HEALTH &amp; WELLBEING</b>	<b>MENTAL HEALTH</b>	3	Good health and wellbeing		Yes	No	No	No
		<b>PHYSICAL HEALTH</b>	3, 5	Good health and wellbeing	Gender equality	Yes	No	No	No
		<b>CHILDHOOD HEALTH</b>	2, 3, 4	Good health and wellbeing	Zero hunger	Yes	No	No	No
		<b>WELLBEING</b>	3	Good health and wellbeing		Yes	No	No	Yes
	<b>HOMES &amp; COMMUNITY</b>	<b>HOUSING</b>	8, 10, 11	Reduced inequalities	Sustainable cities and communities	No	No	No	Yes
		<b>SAFETY</b>	5, 16	Peace, justice and strong institutions	Gender equality	No	No	No	Yes
		<b>COHESION</b>	9, 10, 11, 16	Peace, justice and strong institutions	Industry, innovation and infrastructure	No	No	No	Yes
		<b>ENGAGEMENT/ EMPOWERMENT</b>	3, 8, 11, 16	Peace, justice and strong institutions	Sustainable cities and communities	No	No	No	Yes
	<b>LEARNING &amp; SKILLS</b>	<b>CHILDHOOD EDUCATION</b>	4	Quality education		Yes	No	No	No
		<b>ADULT LEARNING</b>	4, 8, 10	Quality education	Decent work and economic growth	No	No	Yes	No

<b>FAIR</b>	<b>EQUALITY &amp; INCLUSION**</b>	<b>INCOME</b>							
			1, 3, 10,	No poverty	Gender equality	Yes	No	Yes	No
		<b>FOOD POVERTY</b>	1, 2, 3, 10	Zero hunger	Reduced inequalities	Yes	No	Yes	No
		<b>HEALTH</b>	3, 10	Good health and wellbeing	Reduced inequalities	Yes	No	Yes	No
		<b>EDUCATION</b>	4, 10	Quality education	Reduced inequalities	Yes	No	Yes	No
		<b>EMPLOYMENT</b>	8, 10	Decent work and economic growth	Reduced inequalities	No	No	Yes	No
<b>SUSTAINABLE</b>	<b>ENVIRONMENT</b>	<b>WELLBEING</b>	3, 10	Good health and wellbeing	Reduced inequalities	Yes	No	Yes	Yes
		<b>EMISSIONS</b>	11, 12, 13	Sustainable cities and communities	Responsible consumption and production	No	Yes	No	No
		<b>WASTE</b>	11, 12, 13	Sustainable cities and communities	Responsible consumption and production	No	Yes	No	No
		<b>ENERGY</b>	7, 8, 11, 12, 13	Affordable and clean energy	Sustainable cities and communities	No	Yes	No	No
		<b>LAND USE</b>	2, 3, 9, 11, 12, 13, 15	Sustainable cities and communities	Responsible consumption and production	No	Yes	No	No
		<b>AIR POLLUTION</b>	3, 11, 12	Sustainable cities and communities	Responsible consumption and production	No	No	No	No

		<b>LOCAL ENVIRONMENT</b>	3, 6, 11, 12, 13, 14, 15	Sustainable cities and communities	Responsible consumption and production	No	Yes	No	No
--	--	------------------------------	-----------------------------	---------------------------------------	--	----	-----	----	----

## **Using the framework at city-level**

The metrics framework can be used to measure to what extent Bristol is a thriving and healthy city, built on a fair social foundation, within sustainable environmental limits.

This is achieved by concentrating on indicators that are measured at city-level. Some of these indicators are suitable for tracking change year on year, whereas others should be compared between Year 5 and the baseline (see table 3).

Improvements in indicators over time suggest that something is being done in Bristol to support this, whether that is a grassroots movement, a policy change or a different intervention. Where indicators worsen over time, this suggests something is happening in Bristol that does not support the indicator, for instance, cuts to funding. Where indicators are stable over time, this could be a sign that the conditions needed to maintain this are in place in Bristol. However, this could also be a sign that opposing forces are balanced out - something may be happening that improves what the indicator is capturing, while something else is happening that is to its detriment.

## **Using the framework at Funding Priority Group-level**

The metrics framework can be used to measure how well the goals of an FPG are being achieved, at city-level and ward-level. This is achieved by concentrating on indicators that are related to City Funds' Theories of Change at both city-level and ward-level. Some of these indicators are suitable for tracking change year on year, whereas others are more suitable for tracking systems change (five years plus).

## **Using the framework at project-level**

All projects selected for funding or investment should aim to have an impact on at least one indicator in the City Funds indicator framework and reflect the wider goals of a healthy, fair and sustainable city. This is checked by the City Funds team when projects are reviewed. Each indicator and subdomain can be linked to a funding priority, so once funding decisions are made it should be possible to see in which domain or subdomain we will see an impact based on the timelines given by the projects. Depending on the number, scale and length of projects in each domain or subdomain, alongside data provided by the Happiness Pulse, we should be able to infer the extent to which changes in indicators can be attributed to the programme.

## **Using the framework in relation to One City Plan**

The indicator framework uses the One City Plan themes to organise the indicators. This makes it possible to see in the future how City Funds contributed to the One City Plan. If funding and investment decisions are also marked against the indicators it would also be possible to see how many projects are upcoming against each of the themes.





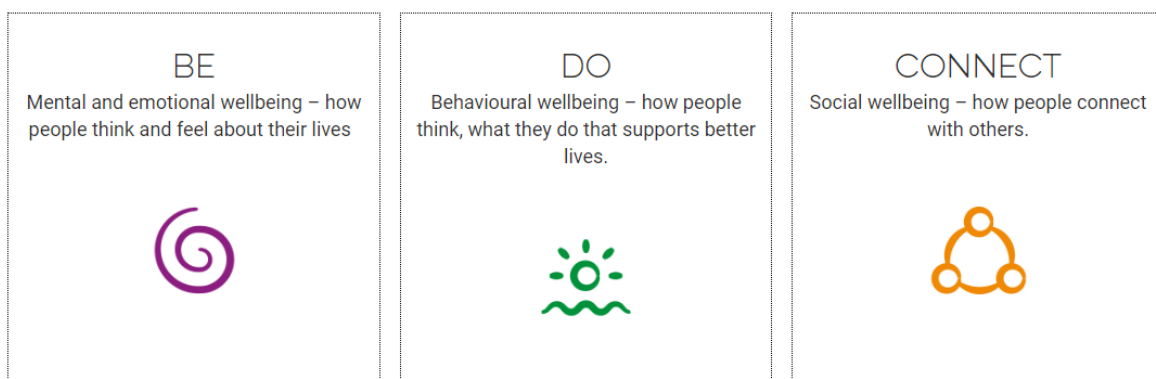
## Using the framework in relation to UN Sustainable Development Goals

Using the information detailed on the [One City Dashboard](#) we linked the themes to the SDGs. This provides an overview of what indicators are gathered against the SDGs through City Funds. Specific One City targets related to the SDGs will be revised annually and presented on the dashboard. It is recommended for the City Funds team to check these to allow any reporting on specific targets from emission reductions to education programmes to be done directly through the process monitoring of funding and investment decisions.

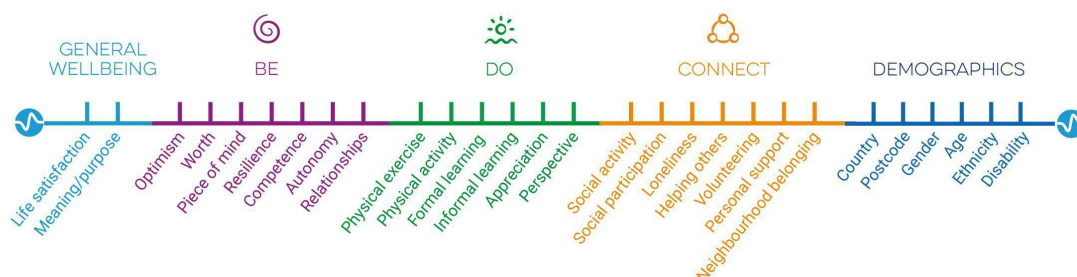
## The Happiness Pulse



The Happiness Pulse is a survey and accompanying online app designed to help people to measure, understand and improve wellbeing. The core survey measures general wellbeing (life satisfaction and life purpose) and three wellbeing domains:



The survey also collects demographic information. The diagram below summarises what is collected by the core survey:



The app allows organisations to easily distribute the survey to a set of respondents via a custom URL and to access result summaries, on an online dashboard.

The Happiness Pulse questions will allow projects to measure the citizen-level impact of their project on wellbeing.

# Full indicator list

Table 3. Full indicator list for the City Funds indicator framework



## HEADLINE: HEALTHY

										Funding Priority Groups			
DOMAIN (One City THEME)	SUB-DOMAIN	INDICATOR NAME	Indicator description	Data source	Geog. level	Geog. coverage	Latest data timepoint	Tracking type	Frequency of data publication	HW	ET	EI	CI
CONNECTIVITY	ACCESS	Use of green space	% who visit Bristol's parks and green spaces at least once a week	Bristol QoL survey	Ward	Bristol	2020/21	year on year	Annual (or more frequent)		Yes		
CONNECTIVITY	ACCESS	Journey times to key services	Average journey time by public transport or walking to schools (average of primary and secondary), food store, and GP	DfT	Local authority	National	2017	systems	Annual (or more frequent)		Yes	Yes	
LEARNING & SKILLS	ADULT LEARNING	Adults with no qualifications	% with no formal qualification	Bristol QoL survey	Ward	Bristol	2020/21	year on year	Annual (or more frequent)			Yes	
LEARNING & SKILLS	ADULT LEARNING	Adult education	% satisfied with adult learning opportunities	Bristol QoL survey	Ward	Bristol	2020/21	year on year	Annual (or more frequent)			Yes	
LEARNING & SKILLS	ADULT LEARNING	Seeking advice	% who know where to get information, advice and guidance about employment and training	Bristol QoL survey	Ward	Bristol	2020/21	year on year	Annual (or more frequent)			Yes	
LEARNING & SKILLS	ADULT LEARNING	Adult education	% of adults who have participated in education or training in the last four weeks	Centre for Thriving Places using Labour	Local authority	National	2020/21	year on year	Annual (or more frequent)			Yes	

				Force Survey									
<b>LEARNING &amp; SKILLS</b>	<b>ADULT LEARNING</b>	Apprenticeships	Rate of apprenticeship starts	DfE	Local authority	National	Aug 2019- Apr 2020	year on year	Annual (or more frequent)			Yes	
<b>LEARNING &amp; SKILLS</b>	<b>ADULT LEARNING</b>	Adults with no qualifications	% respondents with no qualifications of level unknown - aged 16-64	NOMIS	Local authority	National	2020	year on year	Annual (or more frequent)			Yes	
<b>LEARNING &amp; SKILLS</b>	<b>CHILDHOOD EDUCATION</b>	Educational attainment	Attainment 8 Scores in Bristol (by Ward)	Bristol Open Data	Ward	Bristol	2018-2019	year on year	Annual (or more frequent)	Yes			
<b>LEARNING &amp; SKILLS</b>	<b>CHILDHOOD EDUCATION</b>	Early years achievement	Early years pupils achieving a good level of development, Ward	Bristol Open Data	Ward	Bristol	2018-2019	year on year	Annual (or more frequent)	Yes			
<b>LEARNING &amp; SKILLS</b>	<b>CHILDHOOD EDUCATION</b>	Nursery quality	% of nursery providers rated 'outstanding' or 'good' by Ofsted (3 year average)	<a href="https://www.gov.uk">Gov.uk</a>	Local authority	National	2020	year on year	Annual (or more frequent)	Yes			
<b>LEARNING &amp; SKILLS</b>	<b>CHILDHOOD EDUCATION</b>	Educational attainment	Average Attainment 8 Score per pupil (GCSE level)	ONS/PHE	Local authority	National	2019/20	year on year	Annual (or more frequent)	Yes			
<b>LEARNING &amp; SKILLS</b>	<b>CHILDHOOD EDUCATION</b>	School readiness	all children achieving a good level of development at the end of reception as a percentage of all eligible children.	PHE	Local authority	National	2018/19	year on year	Annual (or more frequent)	Yes			
<b>HEALTH &amp; WELLBEING</b>	<b>CHILDHOOD HEALTH</b>	Obesity and overweight in children	year 6 children with excess weight by ward	Bristol Open Data	Ward	Bristol	2015-2018	year on year	Annual (or more frequent)	Yes			

<b>HEALTH &amp; WELLBEING</b>	<b>CHILDHOOD HEALTH</b>	Obesity and overweight in children	Reception age children with excess weight by Ward	Bristol Open Data	Ward	Bristol	2015-2018	year on year	Annual (or more frequent)	Yes			
<b>HEALTH &amp; WELLBEING</b>	<b>CHILDHOOD HEALTH</b>	Healthy schools award	Number of schools awarded a Bristol Healthy Schools food environment award (Specialist or Advanced)	<a href="https://www.bristol.gov.uk/web/bristol-health-y-schools/healthy-schools-finder">https://www.bristol.gov.uk/web/bristol-health-y-schools/healthy-schools-finder</a>	Local authority	Bristol	Oct-21	systems	Annual (or more frequent)	Yes			
<b>HEALTH &amp; WELLBEING</b>	<b>CHILDHOOD HEALTH</b>	Obesity and overweight in children	% obesity and overweight in children in Year 6 (2014/15)	PHE	Local authority	National	2019/20	year on year	Annual (or more frequent)	Yes			
<b>HEALTH &amp; WELLBEING</b>	<b>CHILDHOOD HEALTH</b>	General health at 15	The percentage of 15 year olds who responded to Q1 in the What About YOUth survey ("How is your health in general? Would you say it was...") with the answer "Excellent".	PHE	Local authority	National	2014/15	Systems	Unknown	Yes			
<b>HOMES &amp; COMMUNITY</b>	<b>COHESION</b>	Satisfaction with local area	% satisfied with their local area	Bristol QoL survey	Ward	Bristol	2020/21	year on year	Annual (or more frequent)				Yes
<b>HOMES &amp; COMMUNITY</b>	<b>COHESION</b>	Helping out neighbours	% who help out their neighbours	Bristol QoL survey	Ward	Bristol	2020/21	year on year	Annual (or more frequent)				Yes
<b>HOMES &amp; COMMUNITY</b>	<b>COHESION</b>	Social participation	% who lack the information to get involved in their community	Bristol QoL survey	Ward	Bristol	2020/21	year on year	Annual (or more frequent)				Yes

<b>HOMES &amp; COMMUNITY</b>	<b>COHESION</b>	Community belonging	% who agree people from different backgrounds get on well together in their neighbourhood	Bristol QoL survey	Ward	Bristol	2020/21	year on year	Annual (or more frequent)				Yes
<b>HOMES &amp; COMMUNITY</b>	<b>COHESION</b>	Community belonging	% who feel they belong to their neighbourhood	Bristol QoL survey	Ward	Bristol	2020/21	year on year	Annual (or more frequent)				Yes
<b>HOMES &amp; COMMUNITY</b>	<b>COHESION</b>	Social fragmentation	Social Fragmentation Index score	Centre for Thriving Places using data from ONS/NOMIS.	Local authority	National	2020	systems	Every 5 years or less frequent				Yes
<b>CONNECTIVITY</b>	<b>COMMUNICATIONS</b>	Internet access	% who used the internet in the last 3 months	ONS	Local authority	National	2020	systems	Annual (or more frequent)			Yes	
<b>ECONOMY</b>	<b>EMPLOYMENT</b>	NEET	16-17 year olds NEET or whose activity is not known in Bristol (by Ward)	Bristol Open Data	Ward	Bristol		year on year	Annual (or more frequent)			Yes	
<b>ECONOMY</b>	<b>EMPLOYMENT</b>	Zero hour contracts	% in paid work on zero hour contracts	Bristol QoL survey	Ward	Bristol	2020/21	year on year	Annual (or more frequent)			Yes	
<b>ECONOMY</b>	<b>EMPLOYMENT</b>	Permanent employees	% in paid work who are permanent employees	Bristol QoL survey	Ward	Bristol	2018-2019	year on year	Annual (or more frequent)			Yes	



<b>ECONOMY</b>	<b>EMPLOYMENT</b>	Good jobs	% of people who are on permanent contracts (or on temporary contracts and not seeking permanent employment), who earn more than the Living Wage (Living Wage Foundation), and are not overworked (i.e. <49 hours a week), or underworked (unwillingly working part-time).	Centre for Thriving Places using Labour Force Survey	Local authority	National	2020/21	year on year	Annual (or more frequent)			Yes	
<b>ECONOMY</b>	<b>EMPLOYMENT</b>	Claimant count	Claimant count as a % of working age population	NOMIS	Local authority	National	2020	year on year	Annual (or more frequent)			Yes	
<b>ECONOMY</b>	<b>EMPLOYMENT</b>	Claimant count	Claimant count as a % of working age population	NOMIS	LSOA	National	2020	year on year	Annual (or more frequent)			Yes	
<b>ECONOMY</b>	<b>EMPLOYMENT</b>	Youth claimant count	Youth (16-17) claimant count per 1,000 population aged 16-17	NOMIS	Local authority	National	2020	year on year	Annual (or more frequent)			Yes	
<b>ECONOMY</b>	<b>EMPLOYMENT</b>	Unwillingly out of work	% of people over 16 who want a job, who are either unemployed or economically inactive	NOMIS	Local authority	National	2020	year on year	Annual (or more frequent)			Yes	
<b>HOMES &amp; COMMUNITY</b>	<b>ENGAGEMENT/ EMPOWERMENT</b>	Local influence	% who agree they can influence decisions that affect their local area	Bristol QoL survey	Ward	Bristol	2020/21	year on year	Annual (or more frequent)				Yes
<b>HOMES &amp; COMMUNITY</b>	<b>ENGAGEMENT/ EMPOWERMENT</b>	Volunteering	% who volunteer or help out in their community at least 3 times a year	Bristol QoL survey	Ward	Bristol	2020/21	year on year	Annual (or more frequent)				Yes

<b>HOMES &amp; COMMUNITY</b>	<b>ENGAGEMENT/ EMPOWERMENT</b>	Participation in culture	% who never participate in cultural activities	Bristol QoL survey	Ward	Bristol	2020/21	year on year	Annual (or more frequent)				Yes
<b>HOMES &amp; COMMUNITY</b>	<b>ENGAGEMENT/ EMPOWERMENT</b>	Volunteering in sport or activity	Volunteering at least twice in the year to support sport / physical activity.	Sport England	Local authority	National	2019/20	systems	Every 2-4 years				Yes
<b>HOMES &amp; COMMUNITY</b>	<b>ENGAGEMENT/ EMPOWERMENT</b>	Clubs and societies	Combination of the following heritage index indicators: Youth archaeologist clubs, Nature Clubs for Kids, Civic societies	Centre for Thriving Places	Local authority	National	2019	systems	Unknown				Yes
<b>HOMES &amp; COMMUNITY</b>	<b>ENGAGEMENT/ EMPOWERMENT</b>	Participation in heritage	Combination of the following heritage index indicators: participation - visiting heritage sites, museum participation rates, archive participation rate, heritage site participation rate, historic parks and gardens participation rate. Combines indicators from all domains of the heritage index	RSA heritage index	Local authority	National	2011-2013	systems	Unknown				Yes
<b>HOMES &amp; COMMUNITY</b>	<b>ENGAGEMENT/ EMPOWERMENT</b>	Heritage assets	Asset subdomain score of the heritage index	RSA Heritage Index	Local authority	National	2016	systems	Unknown				Yes
<b>HOMES &amp; COMMUNITY</b>	<b>ENGAGEMENT/ EMPOWERMENT</b>	General election turnout	Total vote turnout (inc postal votes rejected and votes rejected at count) - General Election 2017	UK Parliament	Local authority	National	2017	systems	Variable				Yes

<b>HOMES &amp; COMMUNITY</b>	<b>ENGAGEMENT/EMPOWERMENT</b>	Group and organisation activity	% of people who are a member of an organisation	Understanding Society Survey	Local authority	National	2016	year on year	Annual (or more frequent)				Yes
<b>HOMES &amp; COMMUNITY</b>	<b>HOUSING</b>	Housing condition	% satisfied with the state of repair of their home	Bristol QoL survey	Ward	Bristol	2020/21	year on year	Annual (or more frequent)				Yes
<b>HOMES &amp; COMMUNITY</b>	<b>HOUSING</b>	Satisfaction with accommodation	% satisfied they can stay in their home for as long as they choose to	Bristol QoL survey	Ward	Bristol	2020/21	year on year	Annual (or more frequent)				Yes
<b>HOMES &amp; COMMUNITY</b>	<b>HOUSING</b>	Affordable homes	% owner occupiers with the cost of their rent or mortgage payments	Bristol QoL survey	Local authority	Bristol	2018-2019	year on year	Annual (or more frequent)				Yes
<b>HOMES &amp; COMMUNITY</b>	<b>HOUSING</b>	Homelessness numbers	Numbers accepted as being homeless and in priority need PLUS Eligible Homeless People Not In Priority need (per 1000 households)	DCLG, PHE	Local authority	National	2020 Q4 only	year on year	Annual (or more frequent)				Yes
<b>HOMES &amp; COMMUNITY</b>	<b>HOUSING</b>	Housing condition	Social and private housing in poor condition (proportion)	IMD	Local authority	National	2019	systems	Every 2-4 years				Yes
<b>HOMES &amp; COMMUNITY</b>	<b>HOUSING</b>	Affordable homes	Ratio of median house price to median gross annual (where available) workplace-based earnings	ONS	Local authority	National	2020	year on year	Annual (or more frequent)				Yes
<b>HOMES &amp; COMMUNITY</b>	<b>HOUSING</b>	Noise complaints	Noise complaints (per year per local authority about noise per thousand population)	PHE	Local authority	National	2015/16	systems	Annual (or more frequent)				Yes

<b>ECONOMY</b>	<b>INCOME</b>	Ethnic minority employment rate	aged 16-64 employment rate - ethnic minority	NOMIS	Local authority	National	2020	year on year	Annual (or more frequent)			Yes	
<b>ECONOMY</b>	<b>LOCAL AND INCLUSIVE GROWTH</b>	Charities and community groups	Number of registered charities	NCVO Almanac	Local authority	National	2018/19	Systems	Annual (or more frequent)				Yes
<b>ECONOMY</b>	<b>LOCAL AND INCLUSIVE GROWTH</b>	Local business	Ratio of enterprises to local units	ONS	Local authority	National	2020	Systems	Annual (or more frequent)			Yes	Yes
<b>ECONOMY</b>	<b>LOCAL AND INCLUSIVE GROWTH</b>	SMEs	SMEs per 1000 people	ONS (to be calculated by Centre for Thriving Places)	Local authority	National	2021	Systems	By request only			Yes	Yes
<b>HEALTH &amp; WELLBEING</b>	<b>MENTAL HEALTH</b>	Self-harm	Emergency hospital admissions as a result of self harm by Ward	Bristol Open Data	Local authority	National	2016-2017	year on year	Annual (or more frequent)	Yes			
<b>HEALTH &amp; WELLBEING</b>	<b>MENTAL HEALTH</b>	Mental wellbeing	% below average mental wellbeing	Bristol QoL survey	Ward	Bristol	2020/21	year on year	Annual (or more frequent)	Yes			
<b>HEALTH &amp; WELLBEING</b>	<b>MENTAL HEALTH</b>	Mental wellbeing	% whose mental / emotional health prevents them from leaving their home when they want to	Bristol QoL survey	Ward	Bristol	2020/21	year on year	Annual (or more frequent)	Yes			
<b>HEALTH &amp; WELLBEING</b>	<b>MENTAL HEALTH</b>	Depression and anxiety prevalence	% reporting depression or anxiety 2016/17 in GP survey question about state of health today	PHE	Local authority	National	2016-2017	year on year	Annual (or more frequent)	Yes			

<b>HEALTH &amp; WELLBEING</b>	<b>MENTAL HEALTH</b>	Long-term mental health disorders	% of respondents to GP Patient Survey reporting a long-term mental health problem	PHE	Local authority	National	2017-2018	year on year	Annual (or more frequent)	Yes			
<b>HEALTH &amp; WELLBEING</b>	<b>MENTAL HEALTH</b>	Severe mental illness	Severe mental illness (psychosis etc) QOF prevalence 2016/17	PHE	Local authority	National	2018-2019	year on year	Annual (or more frequent)	Yes			
<b>HEALTH &amp; WELLBEING</b>	<b>MENTAL HEALTH</b>	Suicide rate	Age-standardised mortality rate from suicide and injury of undetermined intent per 100,000 population	PHE	Local authority	National	2017-2019	year on year	Annual (or more frequent)	Yes			
<b>HEALTH &amp; WELLBEING</b>	<b>PHYSICAL HEALTH</b>	Life expectancy	Life expectancy by ward	Bristol Open Data	Ward	Bristol	2018-2020	systems	Annual (or more frequent)	Yes			
<b>HEALTH &amp; WELLBEING</b>	<b>PHYSICAL HEALTH</b>	Premature mortality	Premature mortality, all causes, Ward	Bristol Open Data	Ward	Bristol	2018-2020	year on year	Annual (or more frequent)	Yes			
<b>HEALTH &amp; WELLBEING</b>	<b>PHYSICAL HEALTH</b>	Physical activity	% who do enough regular exercise each week (at least 150 mins moderate or 75 mins vigorous exercise)	Bristol QoL survey	Ward	Bristol	2020/21	year on year	Annual (or more frequent)	Yes			
<b>HEALTH &amp; WELLBEING</b>	<b>PHYSICAL HEALTH</b>	Illness and disability	Comparative Illness and Disability Ratio – an age and sex standardised measure of morbidity and disability	IMD	Local authority	National	2019	systems	Every 2-4 years	Yes			
<b>HEALTH &amp; WELLBEING</b>	<b>PHYSICAL HEALTH</b>	Illness and disability	Comparative Illness and Disability Ratio – an age and sex standardised measure of morbidity and disability	IMD	LSOA	National	2019	systems	Every 2-4 years	Yes			

<b>HEALTH &amp; WELLBEING</b>	<b>PHYSICAL HEALTH</b>	Years of potential life lost	Years of Potential Life Lost – an age and sex standardised measure of premature death	IMD	Local authority	National	2019	systems	Every 2-4 years	Yes			
<b>HEALTH &amp; WELLBEING</b>	<b>PHYSICAL HEALTH</b>	Years of potential life lost	Years of Potential Life Lost – an age and sex standardised measure of premature death	IMD	LSOA	National	2019	systems	Every 2-4 years	Yes			
<b>HEALTH &amp; WELLBEING</b>	<b>PHYSICAL HEALTH</b>	Long term disability	% of those with a reported long term illness disability that limits day-to-day activities	NOMIS	Local authority	National	2011	systems	Every 5 years or less frequent	Yes			
<b>HEALTH &amp; WELLBEING</b>	<b>PHYSICAL HEALTH</b>	Subjective health status	Self-reported state of health 15+	ONS/APS	Local authority	National	2017-2018	year on year	Annual (or more frequent)	Yes			
<b>HEALTH &amp; WELLBEING</b>	<b>PHYSICAL HEALTH</b>	Underage pregnancy	Under 18s conception rate per 1000	PHE	Local authority	National	2018	year on year	Annual (or more frequent)	Yes			
<b>HEALTH &amp; WELLBEING</b>	<b>PHYSICAL HEALTH</b>	Physical activity	Percentage of adults (aged 19+) that meet CMO recommendations for physical activity (150+ moderate intensity equivalent minutes per week).	PHE	Local authority	National	2019/20	year on year	Annual (or more frequent)	Yes			
<b>HEALTH &amp; WELLBEING</b>	<b>PHYSICAL HEALTH</b>	Older persons health status	Average health status score for adults aged 65 and over as measured using the EQ-5D scale. Derived from responses to Q34 on the GP Patient's Survey	PHE	Local authority	National	2016-2017	year on year	Discontinued	Yes			

<b>HEALTH &amp; WELLBEING</b>	<b>PHYSICAL HEALTH</b>	Life expectancy	Average life expectancy at birth (years)	PHE	Local authority	National	2017-2019	systems	Annual (or more frequent)	Yes			
<b>HEALTH &amp; WELLBEING</b>	<b>PHYSICAL HEALTH</b>	Preventable mortality	Age-standardised rate of mortality from preventable causes per 100,000 population	PHE	Local authority	National	2016-2018	year on year	Annual (or more frequent)	Yes			
<b>HOMES &amp; COMMUNITY</b>	<b>SAFETY</b>	Young offenders	Youth offenders by ward	Bristol Open Data	Ward	Bristol	2020/21	year on year	Annual (or more frequent)				Yes
<b>HOMES &amp; COMMUNITY</b>	<b>SAFETY</b>	Crime	Police recorded crime by selected offence group, ward	Bristol Open Data	Ward	Bristol	2020/21	year on year	Annual (or more frequent)				Yes
<b>HOMES &amp; COMMUNITY</b>	<b>SAFETY</b>	Anti-social behaviour	ASB incidents reported to the Police in Bristol (by Ward)	Bristol Open Data	Ward	Bristol	2020/21	year on year	Annual (or more frequent)				Yes
<b>HOMES &amp; COMMUNITY</b>	<b>SAFETY</b>	Safety	% who feel safe outdoors after dark	Bristol QoL survey	Ward	Bristol	2020/21	year on year	Annual (or more frequent)				Yes
<b>HOMES &amp; COMMUNITY</b>	<b>SAFETY</b>	Crime Severity Index	Crime Severity Index score. Rate of crimes, weighted by severity	ONS	Local authority	National	2019/20	year on year	Annual (or more frequent)				Yes
<b>HOMES &amp; COMMUNITY</b>	<b>SAFETY</b>	Domestic abuse	Rate (per 1000 people) of domestic abuse-related offences recorded by the police, by police force area	ONS	Local authority	National	2019/20	year on year	Annual (or more frequent)				Yes
<b>HOMES &amp; COMMUNITY</b>	<b>SAFETY</b>	Young offenders	Rate of 10-17 year olds receiving their first reprimand, warning or conviction per 100,000 population	PHOF/MoJ	Local authority	National	2019	year on year	Annual (or more frequent)				Yes



<b>HOMES &amp; COMMUNITY</b>	<b>SAFETY</b>	Sexual violence	Violent crime: sexual offences per 1,000 population	Fingertips	Local authority	Bristol	2019/20	year on year	Annual (or more frequent)				
<b>HOMES &amp; COMMUNITY</b>	<b>SAFETY</b>	Female genital mutilation/cutting	Number of newly reported cases of FGM in Bristol, per thousand women	BCC Public Health Knowledge Source	Local authority	Bristol	2020	systems	Annual (or more frequent)				
<b>CONNECTIVITY</b>	<b>TRANSPORT</b>	Public transport	% who take the train to work	Bristol QoL survey	Ward	Bristol	2020/21	year on year	Annual (or more frequent)		Yes	Yes	
<b>CONNECTIVITY</b>	<b>TRANSPORT</b>	Public transport	% who take the bus to work	Bristol QoL survey	Ward	Bristol	2020/21	year on year	Annual (or more frequent)		Yes	Yes	
<b>CONNECTIVITY</b>	<b>TRANSPORT</b>	Active transport	% who walk to work	Bristol QoL survey	Ward	Bristol	2020/21	year on year	Annual (or more frequent)		Yes	Yes	
<b>CONNECTIVITY</b>	<b>TRANSPORT</b>	Active transport	% who cycle to work	Bristol QoL survey	Ward	Bristol	2020/21	year on year	Annual (or more frequent)		Yes	Yes	
<b>CONNECTIVITY</b>	<b>TRANSPORT</b>	Car traffic	% who think traffic congestion is a problem locally	Bristol QoL survey	Ward	Bristol	2020/21	year on year	Annual (or more frequent)		Yes	Yes	
<b>CONNECTIVITY</b>	<b>TRANSPORT</b>	Car traffic	Car vehicle traffic thousand vehicle miles per capita	DfT	Local authority	National	2019	year on year	Annual (or more frequent)		Yes	Yes	
<b>CONNECTIVITY</b>	<b>TRANSPORT</b>	Road traffic accidents	Road traffic accidents rate (per 1000 resident and workplace population)	DfT	Local authority	National	2019	year on year	Annual (or more frequent)		Yes	Yes	

<b>CONNECTIVITY</b>	<b>TRANSPORT</b>	Public transport	% for whom inaccessible public transport prevents them from leaving their home when they want to	Bristol QoL survey	Ward	Bristol	2020/21	year on year	Annual (or more frequent)		Yes	Yes	
<b>CONNECTIVITY</b>	<b>TRANSPORT</b>	Public transport	% of those who commute to work via public transport	ONS	Local authority	National	2011	systems	Every 5 years or less frequent		Yes	Yes	
<b>CONNECTIVITY</b>	<b>TRANSPORT</b>	Active transport: walking	% of adults walking for travel at least three days per week	PHE	Local authority	National	2018/19	year on year	Annual (or more frequent)		Yes	Yes	
<b>CONNECTIVITY</b>	<b>TRANSPORT</b>	Active transport: cycling	% of adults cycling for travel at least three days per week	PHE	Local authority	National	2018/19	year on year	Annual (or more frequent)		Yes	Yes	
<b>HEALTH &amp; WELLBEING</b>	<b>WELLBEING</b>	Self reported happiness	Average self reported happiness	ONS	Local authority	National	2019/20	year on year	Annual (or more frequent)	Yes			Yes
<b>HEALTH &amp; WELLBEING</b>	<b>WELLBEING</b>	Self reported life satisfaction	Average self reported life satisfaction	ONS	Local authority	National	2019/20	year on year	Annual (or more frequent)	Yes			Yes
<b>HEALTH &amp; WELLBEING</b>	<b>WELLBEING</b>	Worthwhile	Average self reported life purpose / sense that life is worthwhile	ONS	Local authority	National	2019/20	year on year	Annual (or more frequent)	Yes			Yes
<b>HEALTH &amp; WELLBEING</b>	<b>WELLBEING</b>	Anxiety	Average self reported anxiety	ONS	Local authority	National	2019/20	year on year	Annual (or more frequent)	Yes			Yes

## HEADLINE: FAIR

### Funding Priority Groups\*

DOMAIN (One City THEME)	SUB-DOMAIN	INDICATOR NAME	Indicator description	Data source	Geog. level	Geog. coverage	Latest data timepoint	Tracking type	Frequency of data publication	HW	ET	EI	CI
EQUALITY & INCLUSION	EDUCATION	Educational attainment - free school meals	Difference between Progress 8 scores of pupils with free school meals status vs. all other pupils	DfE	Local authority	National	2019	year on year	Annual (or more frequent)			Yes	
EQUALITY & INCLUSION	EDUCATION	Educational attainment - pupil disadvantage	Difference between Progress 8 scores of disadvantaged pupils status vs. all other pupils	DfE	Local authority	National	2019	year on year	Annual (or more frequent)			Yes	
EQUALITY & INCLUSION	EDUCATION	Social mobility enabled by education	Average of the 10 standardised indicators from the Social Mobility Index that measure academic achievement and quality of nurseries and schools for those eligible for free school meals (FSM)	<a href="https://gov.uk">Gov.uk</a>	Local authority	National	2016	systems	Unknown	Yes		Yes	
EQUALITY & INCLUSION	EMPLOYMENT	Employment inequality- Ethnicity	% difference between 'Other than White' employment compared to 'white' employment	<a href="https://gov.uk">Gov.uk</a>	Local authority	National	2019	year on year	Annual (or more frequent)			Yes	
EQUALITY & INCLUSION	FOOD POVERTY	Food insecurity	% households which have experienced moderate to severe food insecurity	Bristol QoL survey	Ward	Bristol	2020/21	year on year	Annual (or more frequent)	Yes			
EQUALITY & INCLUSION	FOOD POVERTY	Food insecurity	% in receipt of emergency food and/or groceries during the last	Bristol QoL survey	Ward	Bristol	2018-2019	year on year	Annual (or more)	Yes			

			12 months						frequent)				
<b>EQUALITY &amp; INCLUSION</b>	<b>FOOD POVERTY</b>	5 a day	Proportion of the population meeting the recommended 5 a day on a usual day. 2017/2018. By district LA	PHE	Local authority	National	2019/20	year on year	Annual (or more frequent)	Yes			
<b>EQUALITY &amp; INCLUSION</b>	<b>FOOD POVERTY</b>	Use of food banks	Number of three-day emergency food parcels given by Trussell Trust food banks	Trussell Trust regional food bank statistics	Region	National	2020/21	year on year	Annual (or more frequent)	Yes			
<b>EQUALITY &amp; INCLUSION</b>	<b>HEALTH</b>	Health inequality	Slope index of inequality (SII) in life expectancy at birth - average (SII years)	ONS/PHE	Local authority	National	2017-2019	year on year	Unknown	Yes		Yes	
<b>EQUALITY &amp; INCLUSION</b>	<b>INCOME</b>	Financial difficulty	% who find it difficult to manage financially	Bristol QoL survey	Ward	Bristol	2020/21	year on year	Annual (or more frequent)	Yes		Yes	
<b>EQUALITY &amp; INCLUSION</b>	<b>INCOME</b>	Income inequality	% whose financial circumstances prevent them from leaving their home when they want to	Bristol QoL survey	Ward	Bristol	2020/21	year on year	Annual (or more frequent)			Yes	
<b>EQUALITY &amp; INCLUSION</b>	<b>INCOME</b>	Income inequality	% whose money problems stop them from getting involved in their community	Bristol QoL survey	Ward	Bristol	2020/21	year on year	Annual (or more frequent)			Yes	
<b>EQUALITY &amp; INCLUSION</b>	<b>INCOME</b>	Income deprivation affecting older people	Income Deprivation Affecting Older People	IMD	Local authority	National	2019	systems	Every 2-4 years			Yes	
<b>EQUALITY &amp; INCLUSION</b>	<b>INCOME</b>	Income deprivation	Income Deprivation Affecting Children	IMD	Local authority	National	2019	systems	Every 2-4 years	Yes		Yes	

		affecting children											
<b>EQUALITY &amp; INCLUSION</b>	<b>INCOME</b>	Percentage with low income	% of full-time employees with low relative income (less than 70% of UK median wage)	ONS	Local authority	National	2020	year on year	Annual (or more frequent)	Yes		Yes	
<b>EQUALITY &amp; INCLUSION</b>	<b>INCOME</b>	Income inequality	80/20 percentile weekly earnings difference	ONS	Local authority	National	2017	year on year	Annual (or more frequent)	Yes		Yes	
<b>EQUALITY &amp; INCLUSION</b>	<b>INCOME</b>	Gender pay gap	Percentage: the absolute difference between median gross hourly earnings (excluding overtime) of men and women as a proportion of median gross hourly earnings (excluding overtime) of men. The value implies male earnings are greater than female earnings unless noted otherwise. Based on earnings by workplace location.	PHE/ONS	Local authority	National	2020	year on year	Annual (or more frequent)			Yes	
<b>EQUALITY &amp; INCLUSION</b>	<b>INCOME</b>	Employment inequality for learning disabilities	Gap in the employment rate between those with a learning disability and the overall employment rate	PHE	Local authority	National	2019/20	year on year	Annual (or more frequent)			Yes	
<b>EQUALITY &amp; INCLUSION</b>	<b>WELLBEING</b>	Wellbeing Inequality (MPD)	Average MPD for four WB indicators in ONS	Annual Population Survey (calculated by Centre for Thriving Places)	Local authority	National	2019	year on year	Annual (or more frequent)			Yes	Yes

<b>EQUALITY &amp; INCLUSION</b>	<b>WELLBEING</b>	Wellbeing Inequality (SD)	Average SD for four WB indicators in ONS	Annual Population Survey (calculated by Centre for Thriving Places)	Local authority	National	2019	year on year	Annual (or more frequent)			Yes	Yes
<b>EQUALITY &amp; INCLUSION</b>	<b>N/A</b>	Women in local government	Proportion of council seats held by women	TBC	Local authority	Bristol	2018	systems	Every 2-4 years				

## HEADLINE: SUSTAINABLE

Funding Priority Groups*													
DOMAIN (One City THEME)	SUB-DOMAIN	INDICATOR NAME	Indicator description	Data source	Geog. level	Geog. coverage	Latest data timepoint	Tracking type	Frequency of data publication	HW	ET	EI	CI
<b>ENVIRONMENT</b>	<b>AIR POLLUTION</b>	NO2 concentrations	Annual mean nitrogen dioxide concentrations from modelled annual mean oxides of nitrogen concentrations.	Defra	Local authority	National	2017	year on year	Annual (or more frequent)		Yes		
<b>ENVIRONMENT</b>	<b>AIR POLLUTION</b>	Air pollution: fine particulate matter (PM2.5)	Annual concentration of human-made fine particulate matter at an area level, adjusted to account for population exposure.	PHE	Local authority	National	2017	year on year	Annual (or more frequent)		Yes		

<b>ENVIRONMENT</b>	<b>AIR POLLUTION</b>	HGV traffic	HGV miles per capita	gov.uk Road Traffic Statistics	Local authority	National	2020	year on year	Annual (or more frequent)				
<b>ENVIRONMENT</b>	<b>EMISSIONS</b>	CO2 emissions	Per capita local Authority CO2 emissions estimates within the scope of influence of Local Authorities 2005-2016 (kt CO2): industry, domestic, and transport sectors.	Department for Business, Energy, & Industrial Strategy	Local authority	National	2018	year on year	Annual (or more frequent)		Yes		
<b>ENVIRONMENT</b>	<b>EMISSIONS</b>	Low emissions vehicles	Ultra low emissions vehicles licensed, as a % of all vehicles licensed	<a href="http://Gov.uk">Gov.uk</a>	Local authority	National	2020	year on year	Annual (or more frequent)		Yes		
<b>ENVIRONMENT</b>	<b>EMISSIONS</b>	Low emissions vehicles	Ultra low emissions vehicles licensed, as a % of all vehicles licensed	<a href="http://Gov.uk">Gov.uk</a>	Postcode district	National	2020	year on year	Annual (or more frequent)		Yes		
<b>ENVIRONMENT</b>	<b>EMISSIONS</b>	ULE company vehicles	Number of ultra low emissions company vehicles licensed	<a href="http://Gov.uk">Gov.uk</a>	Local authority	National	2020	year on year	Annual (or more frequent)				
<b>ENVIRONMENT</b>	<b>ENERGY</b>	Energy consumption	Average domestic consumption per capita (tonnes of oil equivalent)	Department for Business, Energy, & Industrial Strategy	Local authority	National	2018	year on year	Annual (or more frequent)		Yes		
<b>ENVIRONMENT</b>	<b>ENERGY</b>	Renewable energy	Household waste sent to energy recovery, % (Bristol Waste monthly)	Bristol Open Data	Local authority	Bristol	43891	year on year	Annual (or more frequent)		Yes		
<b>ENVIRONMENT</b>	<b>ENERGY</b>	Housing energy efficiency	Percent of newly registered lodgements with domestic EPC ratings of C or above	Ministry of HC&LG	Local authority	National	2020	systems	Annual (or more frequent)		Yes		



ENVIRONMENT	ENERGY	Housing energy efficiency	% of domestic EPCs with ratings F or G		Local authority	National	2020	systems	Annual (or more frequent)		Yes		
ENVIRONMENT	ENERGY	Community energy organisations	LA % of total UK community energy organisations (e.g. Bristol = 6% of community energy organisations)	Community Energy England, State of the Sector Report 2019	Local authority	National	2019	systems	Annual (or more frequent)		Yes		
ENVIRONMENT	ENERGY	Renewable electricity	Renewable electricity generation (log KWh per person)	ONS	Local authority	National	2019	year on year	Annual (or more frequent)		Yes		
ENVIRONMENT	ENERGY	Fuel poverty	Proportion of households experiencing fuel poverty	Fingertips	Local authority	National	2018	year on year	Annual (or more frequent)				
ENVIRONMENT	ENERGY	Installed renewable capacity	Installed capacity of renewable energy, megawatts	gov.uk Regional Renewable Statistics	Local authority	National	2020	year on year	Annual (or more frequent)				
ENVIRONMENT	ENERGY	Domestic electricity consumption	Average domestic electricity consumption per household (KWH)	gov.uk Electrical Consumption Statistics	Local authority	Bristol	2019	year on year	Annual (or more frequent)				
ENVIRONMENT	ENERGY	Non-domestic building energy efficiency	% of non-domestic EPCs lodged during the year with ratings F or G	<a href="https://www.gov.uk">Gov.uk</a>	Local authority	National	2020	systems	Annual (or more frequent)				

ENVIRONMENT	ENERGY	Non-domestic electricity consumption	Electricity sales to non-domestic consumers (GWH)	gov.uk Electrical Consumption Statistics	Local authority	National	2019	year on year	Annual (or more frequent)				
ENVIRONMENT	LAND USE	Allotments	Allotment plots	Bristol Open Data	Local authority	Bristol	2019	systems	Unknown		Yes		
ENVIRONMENT	LAND USE	Tree canopy	Tree preservation orders	Bristol Open Data (to be calculated by Centre for Thriving Places)	Postcode district	Bristol	2019-2020	systems	Annual		Yes		
ENVIRONMENT	LAND USE	Green space quality	% satisfied with the quality of parks and green spaces	Bristol QoL survey	Ward	Bristol	2020/21	year on year	Annual (or more frequent)		Yes		
ENVIRONMENT	LAND USE	Bristol Eating Better Award	Number of Bristol Eating Better awards	<a href="https://bristol.gov.uk">Bristol.gov.uk</a>	Local authority	Bristol	2021	year on year	Annual (or more frequent)	Yes	Yes		
ENVIRONMENT	LAND USE	Green space	Sum of % cover of green urban and natural green space (Corine land cover classification)	Centre for Thriving Places using data from Prof. Alasdair Rae	Local authority	National	2012	systems	Every 5 years or less frequent		Yes		
ENVIRONMENT	LAND USE	Land use	Ratio of non-developed land loss to non-built land stock (x100)	Ministry of HC&LG	Local authority	National	2017-2018	systems	Annual (or more frequent)		Yes		

ENVIRONMENT	LOCAL ENVIRONMENT	Tree cover	Proportion of land which is tree cover - coded into categories	Bluesky via Friends of the Earth	Local authority	National	2019	systems	Unknown		Yes		
ENVIRONMENT	LOCAL ENVIRONMENT	Water quality	Surface water quality	Bristol Open Data	Local authority	Bristol	2020	systems	Annual (or more frequent)		Yes		
ENVIRONMENT	LOCAL ENVIRONMENT	Tree cover	Tree planting locations - trees planted per year	Bristol Open Data - CTP to calculate	Local authority	Bristol	2020	systems	Annual (or more frequent)		Yes		
ENVIRONMENT	LOCAL ENVIRONMENT	Air pollution removed by vegetation	Amount of air pollution removed by vegetation in local area	ONS	Local authority	National	2015	systems	Unknown		Yes		
ENVIRONMENT	LOCAL ENVIRONMENT	Exposure to transport related noise	The average of daytime and nighttime percentages of the population exposed to road, rail and air transport noise of 65 dB(A) or more, LAeq,16h per local authority	PHE	Local authority	National	2011	systems	Every 5 years or less frequent		Yes		
ENVIRONMENT	LOCAL ENVIRONMENT	Access to woodland	% of population who have accessible woodland of 2ha or more within 500m of where they live	Woodland Trust	Local authority	National	2017	systems	Unknown		Yes		
ENVIRONMENT	LOCAL ENVIRONMENT	Water catchment status	% of rivers in the Severn river basin district classified by the Water Framework Directive as having at least 'Good' ecological status	Environment Agency Water Body Status Classification	Severn catchment	Bristol	2015	systems	Every 5 years or less frequent				

<b>ENVIRONMENT</b>	<b>WASTE</b>	Household recycling	Household waste reused or recycled, % (Bristol Waste monthly)	Bristol Open Data	Local authority	Bristol	2020	year on year	Annual (or more frequent)		Yes		
<b>ENVIRONMENT</b>	<b>WASTE</b>	Household waste sent to landfill	Household waste sent to landfill, % (Bristol Waste monthly)	Bristol Open Data	Local authority	Bristol	2020	year on year	Annual (or more frequent)		Yes		
<b>ENVIRONMENT</b>	<b>WASTE</b>	Reduction in waste to landfill	% who have reduced their household waste due to climate change concerns	Bristol QoL survey	Ward	Bristol	2020/21	year on year	Annual (or more frequent)		Yes		
<b>ENVIRONMENT</b>	<b>WASTE</b>	Household recycling	Percentage of household waste sent for reuse, recycling or composting	DEFRA	Local authority	National	2019/20	year on year	Annual (or more frequent)		Yes		
<b>ENVIRONMENT</b>	<b>WASTE</b>	Water consumption	Total litres of water used per person per day	Bristol Water	Local authority	Bristol	2019/20	year on year	Annual (or more frequent)				

**\*Funding Priority Groups key:**

HW: Health and Wellbeing

ET: Environmental Transformation

EI: Economic Inclusion

CI: Community Initiatives